

Transportation

The Basics: Transportation

Introduction for the Trainer

Key Content

During this session, participants will learn about the types of transportation available to them in their new community.

Main Messages

There are different types of transportation available to refugees to help them get around their new community. Refugees will need to know how to safely board, ride, and exit the types of transportation they use. They should also know how to safely walk around their neighborhood. The trainer should stress that there are laws in the United States that regulate walking, biking, and driving a car. Participants should be reminded that using safety belts is the law. Participants should be encouraged to use public transportation, where it is available, since car expenses are high.



25 minutes

Objectives

Participants will be able to do the following:

- ▶ State types of public transportation available in their community
- ▶ Describe how to use the public transportation
- ▶ Describe the safety issues and legal requirements of driving a car

Key English Vocabulary

- ▶ *bus*
- ▶ *train*
- ▶ *walk*
- ▶ *How much is the _____ [bus/train]?*

Materials

- Basics of Transportation Signs (included)
- Tape
- Basics of Transportation Cards (included)
- Basics of Transportation Answer Key (included)

Session Preparation

Review the Basics of Transportation Signs and the Basics of Transportation Cards. Remove the forms of transportation that are not available in your area or not relevant to your participants at this time (such as driving a car) and any cards that your participants would find simplistic (such as opening the car door or sitting down on the seat). Find out age requirements for child safety seats in your area and fill in that information.

At the front of the training space, hang the Basics of Transportation Signs that name the types of transportation that are available in your area and relevant to your participants.

Print the needed Basics of Transportation Cards for use and cut along the dotted lines.

Trainer's Introduction of Session to Participants

During this session, we will talk about the types of transportation available in the area and how to safely use them. We will also talk about safety issues and legal requirements related to owning and driving a car.

Introductory Exercise

Briefly review the key English vocabulary for this plan by saying the first word aloud in English. Participants say the word to a partner, and then all together as a group. Continue in the same way with the rest of the words and the question. Use the word that is most likely to be written on signs in your area. Use subway or metro instead of train if that is the word used in your area. Throughout the session, emphasize the words as they come up and use the question whenever there is an opportunity. If there is time (8 to 10 minutes), use the unit vocabulary found at the end of this unit to help participants better understand key English vocabulary words.

Activity

Distribute the Basics of Transportation Cards and pieces of tape to participants. Tell participants that their cards show the process of safely using one of the forms of transportation pictured in the signs at the front of the training space. Introduce the signs.

Tell participants to decide which type of transportation (e.g., bus or car) their cards belong to. Participants then work with others who have cards that picture the same type of transportation and create a sequence showing the order of steps involved in using that form of transportation.

When participants have completed the sequence, review their work with the use of the Basics of Transportation Answer Key. Move cards around if needed. Note where there might be overlap, or when one part of the process could happen before or after another part of the process (as described in the Basics of Transportation Answer Key).

Debrief the session using the questions below.

Debriefing Questions

- ▶ What forms of public transportation have you used before? Which were new?
 - ▶ What is one form of transportation that is available in your community? What are the steps you should take to use it safely?
 - ▶ What is another form of transportation available in your community? What steps should you take to use it safely?
 - ▶ When you want to ride in a car with a young child, what does the child need to sit on?
-

Working With Individuals or Very Small Groups

When working with one to three participants, hang the Basics of Transportation Signs on the wall or spread them out on a table or the floor. Spread the Basics of Transportation Cards out on a table or the floor. Together, participants complete the sequences by placing them near the Basics of Transportation Signs (with tape, if they are on the wall).

Variations and Considerations

If needed, use translated versions of the Basics of Transportation Signs and/or the Basics of Transportation Cards.

For more information on public transportation and ideas for activities, refer to the *Public Transportation Week: Lectures, Field Trip, and Quiz* plan, available here for automatic download: <http://goo.gl/ZetVq0>.

Basics of Transportation Signs



Bike



Bus



Drive a car



Ferry



Ride in a car



Subway/metro



Taxi/cab



Train



Walk

Basics of Transportation Cards



Wear a helmet.



When possible, use bike lanes and ride in the same direction as the traffic on your side of the road.



When there are no bike lanes, ride on the side of the road in the same direction as the traffic.



Use the correct hand signals when turning or stopping.



Lock your bike when you are not using it.



Buy a ticket or pass in advance.



Arrive early.



Wait at a bus stop and flag the bus if needed.



Step onto the bus.



Show your ticket or pass or purchase a ticket.



Sit or hold the rail while standing.



Press the button or pull the string before your stop.



Check to make sure you have all of your belongings.



Exit at your stop.



Study for a learner's permit to drive.



Take and pass the learner's permit test.



Take driver's education classes.



Practice driving with a licensed driver.



Take and pass the driving test.



Get a driver's license.



Buy insurance.



Register your car.



Buy a car.



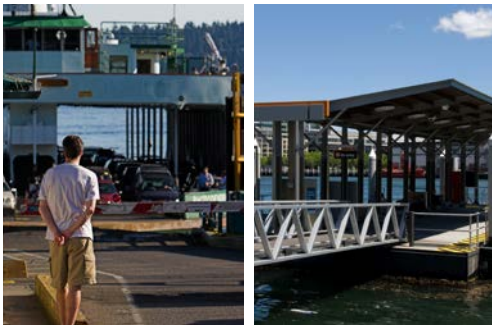
Buy gas.



Maintain your car.



Buy a ticket or pass.



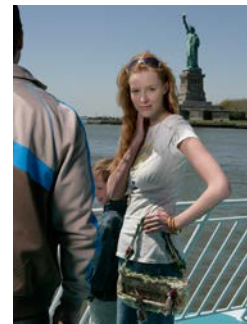
Arrive early.



Board the ferry when it is ready.



Sit or hold the railing while standing.



Check to make sure you have all of your belongings.



Exit when the ferry arrives at your destination.



Open the door.



Buckle children under the age of _____ into child safety seats.



Sit down on the seat.



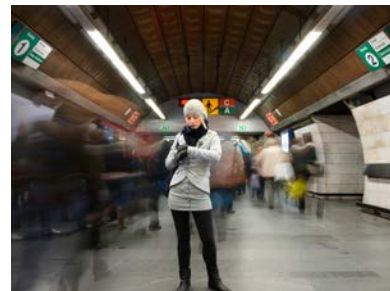
Close the door.



Buckle your safety belt.



Buy a ticket, token, or pass.



Arrive early.



Step into the subway car when it arrives.



Sit or hold the rail while standing.



Check to make sure you have all of your belongings.



Exit at your stop.



Flag a taxi by waving from the side of the road.



Call a taxi company on the telephone.



Go to a taxi stand and tell the attendant that you would like a taxi.



Open the back passenger side door.



Buckle the safety belts of children.



Sit down on the seat.



Close the door.



Buckle your safety belt.



Tell the driver where you are going.



Pay the driver when you arrive at your stop.



Check to make sure you have all of your belongings.



Open the door and get out of the taxi.



Thank the driver and close the door.



Walk to the curb.



Buy a ticket or pass.



Arrive early.



Step onto the train when it is ready.



Sit or hold the rail while standing.



Check to make sure you have all of your belongings.



Exit at your stop.



Walk on the sidewalk when possible.



If there is no sidewalk, walk facing traffic, either off the road or on the shoulder of the road.



Find a crosswalk to cross the road safely.



Press the button.



Wait for a walk signal.



Look left, right, and left again before crossing the road to make sure no cars are coming.



Walk quickly across the road.

Basics of Transportation Answer Key

		Steps to the Process of Using the Form of Transportation	Notes and Overlap Among the Steps
Type of Transportation	Bike	Wear a helmet.	
		When possible, use bike lanes and ride in the same direction as the traffic on your side of the road.	Only one of these two steps would take place.
		When there are no bike lanes, ride on the side of the road, in the same direction as the traffic.	
		Use the correct hand signals when turning or stopping.	
		Lock your bike when you are not using it.	
	Bus	Buy a ticket or pass in advance.	Paying for or purchasing a ticket or pass may take place after stepping onto the bus.
		Arrive early.	
		Wait at a bus stop and flag the bus if needed.	
		Step onto the bus.	
		Show your ticket or pass or purchase a ticket.	
		Sit or hold the rail while standing.	
		Press the button or pull the string before your stop.	
		Check to make sure you have all of your belongings.	
	Drive a Car	Exit at your stop.	
		Study for a learner's permit to drive.	These two steps may be reversed or may not be required, depending on the state and age of the driver.
		Take and pass the learner's permit test.	
		Take driver's education classes.	
		Practice driving with a licensed driver.	
		Take and pass the driving test.	
		Get a driver's license.	
Buy insurance.			
Buy a car.			
Register your car.			
Buy gas.			
Maintain your car.			

		Steps to the Process of Using the Form of Transportation	Notes and Overlap Among the Steps
Type of Transportation	Ferry	Buy a ticket or pass.	Paying for or purchasing a ticket or pass may take place after arriving.
		Arrive early.	
		Board the ferry when it is ready.	
		Sit or hold the railing while standing.	
		Check to make sure you have all of your belongings.	
		Exit when the ferry arrives at your destination.	
	Ride in a Car	Open the door.	
		Buckle children under the age of _____ into child safety seats.	
		Sit down on the seat.	
		Close the door.	
		Buckle your safety belt.	
	Subway/Metro	Buy a ticket, token, or pass.	Purchasing a ticket, token, or pass may take place after arriving.
		Arrive early.	
		Step into the subway car when it arrives.	
		Sit or hold the rail while standing.	
Check to make sure you have all of your belongings.			
Exit at your stop.			
Taxi/Cab	Flag a taxi by waving from the side of the road.	Only one of these three steps would take place.	
	Go to a taxi stand and tell the attendant that you would like a taxi.		
	Call a taxi company on the telephone.		
	Open the back passenger side door.		
	Buckle the safety belts of children.		
	Sit down on the seat.		
	Close the door.		
	Buckle your safety belt.		
	Tell the driver where you are going.		
	Pay the driver when you arrive at your stop.		
	Check to make sure you have all of your belongings.		
	Open the door and get out of the taxi.		
	Thank the driver and close the door.		
	Walk to the curb.		

		Steps to the Process of Using the Form of Transportation	Notes and Overlap Among the Steps
Type of Transportation	Train	Buy a ticket or pass.	
		Arrive early.	
		Step onto the train when it is ready.	
		Sit or hold the rail while standing.	
		Check to make sure you have all of your belongings.	
		Exit at your stop.	
	Walk	Walk on the sidewalk when possible.	Only one of these two steps would take place.
		If there is no sidewalk, walk facing traffic, either off the road or on the shoulder of the road.	
		Find a crosswalk to cross the road safely.	These steps would take place only if there is a crosswalk.
		Press the button.	
		Wait for a walk signal.	
		Look left, right, and left again before crossing the road to make sure no cars are coming.	
		Walk quickly across the road.	